

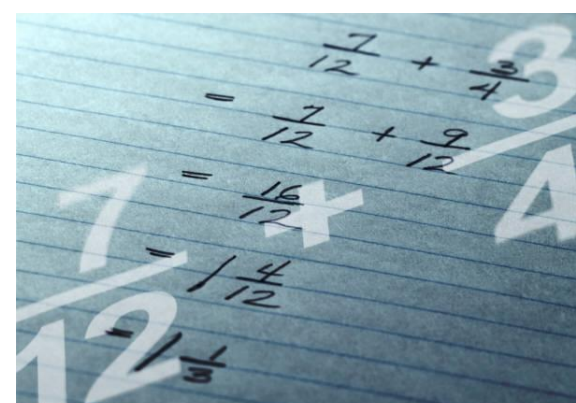


Fraction Through Music



Lesson 10. Introducing the Equal Sign (Part 4.)

$$\frac{1}{2} = \frac{2}{4}$$



$$\frac{2}{4} = \frac{4}{8}$$

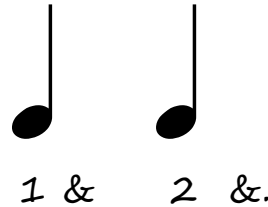




Fraction Music Game

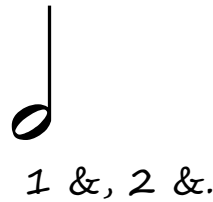
The correct answer is:

A.



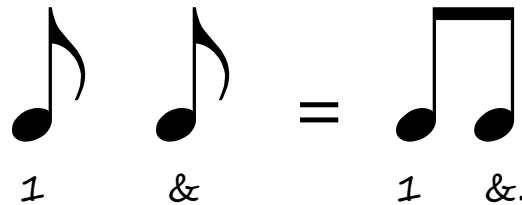
$$\frac{1}{4} + \frac{1}{4} = \frac{2}{4}$$

B.



$$= \frac{1}{2}$$

C.



$$\frac{1}{8} + \frac{1}{8} = \frac{2}{8} = \frac{1}{4}$$

Fantastic!

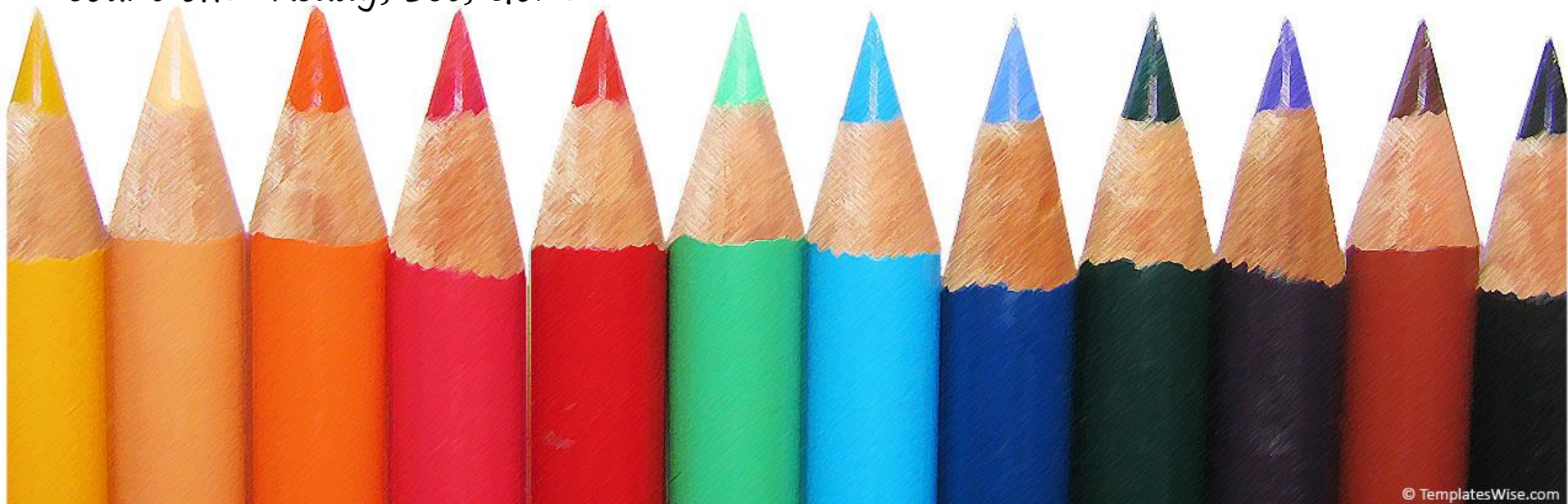


Fraction Music Game

(For this part you can work with one friend or a group of friends)
You get to play 3 musical pieces. One is going to be the correct answer and that will be equal to 1 beat just like a quarter note or two eighth notes. Play the other two musical pieces longer for 2 – 4 beats.

As the music is performed, ask your friend(s) to keep counting in their head along with each musical piece. Remind your friend that the eighth note is equal to only $1/2$ count ($1/2$ beat).

Before you start to play, please tell your friend which musical piece you will play, for example: "Example A" and start your music with a count off: "Ready, Set, Go!"





Fraction Music Game

(Lesson 10. Student's Printout)

Name: _____

Which example is correct?

Write your answer above the line!

A.

B.

C.



Fantastic!



Hand Signs

Recorder Fingering Chart

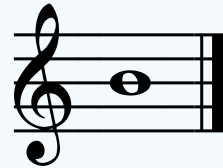
Music Notes



Note B (Mi)



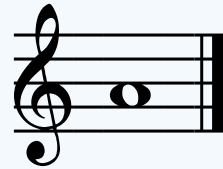
Left Hand Fingers:
Front: Pointer
Back: Thumb



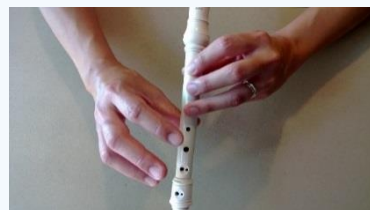
Note A (Re)



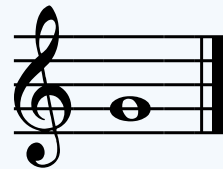
Left Hand Fingers:
Front: Pointer &
Middle
Back: Thumb



Note G (Do)



Left Hand Fingers:
Front: Pointer,
Middle & Ring
Back: Thumb





Thank You!

